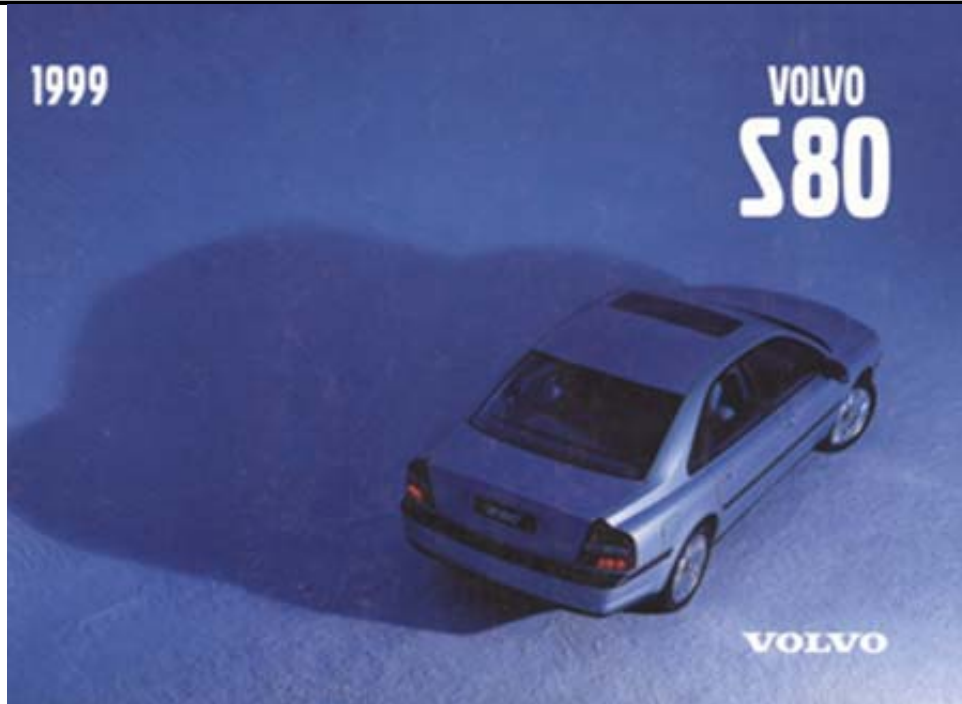
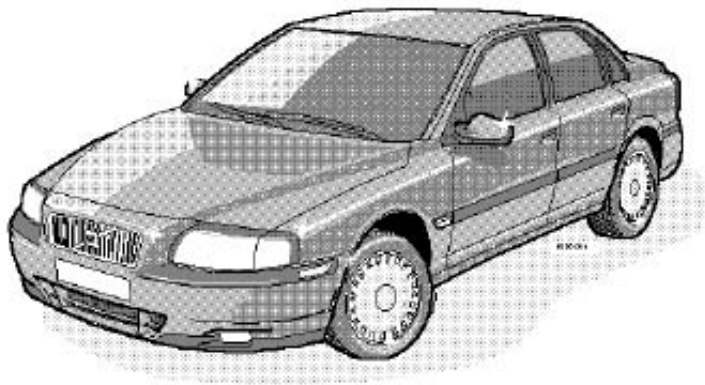


1999 VOLVO S80

This manual deals with the operation and care of your Volvo.



This manual deals with the operation and care of your Volvo



Welcome to the world-wide family of Volvo owners. We trust that you will enjoy many years of safe driving in your Volvo, an automobile designed with your safety and comfort in mind. To help ensure your satisfaction with this vehicle, we encourage you to familiarize yourself with the equipment descriptions, operating instructions and maintenance requirements/recommendations in this manual. We also urge you and your passengers to wear seat belts at all times in this (or any other) automobile. And, of course, please do not operate a vehicle if you may be affected by alcohol, medication or any impairment that could hinder your ability to drive.

Your Volvo is designed to meet all applicable safety and emission standards, as evidenced by the certification labels attached to the driver's door opening and on the left wheel housing in the engine compartment.

For further information please contact your retailer, or:

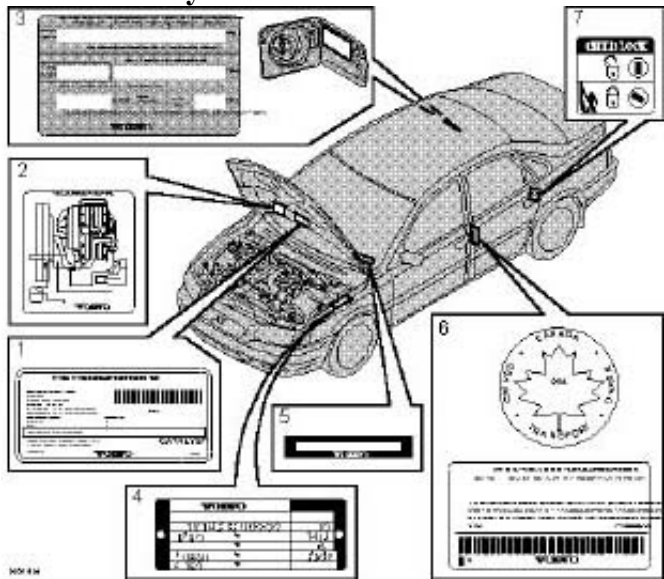
In the USA:

In Canada:

04/02/20161999 Volvo S80

Your Volvo is designed to meet all applicable safety standards, as evidenced by the certification label on the facing side of the driver's door. For further information regarding these regulations, please consult your Volvo retailer.

7 Child safety latch label



* The Vehicle Identification Number (VIN) should always be quoted in all correspondence concerning your vehicle with the retailer and when ordering parts.

All specifications are subject to change without prior notice.

pg.119 Dimensions and weights

Dimensions

Length	189.8 in. (482 cm)
Width	72 in. (183 cm)
Height	57.1 in. (145 cm)
Wheelbase	109.8 in. (279 cm)
Track, front	62.2 in. (158 cm)
Track, rear	61.4 in. (156 cm)
Turning circle (between curbs)	38.1 ft. (11.6 m)
Cargo capacity - trunk	14.2 cu. ft. (0.4 m ³)

Weights

	USA	Canada
Gross vehicle weight (GVW)		
6 cyl.	4600 lbs (2087 kg)	2090 kg
6 cyl. turbo	4630 lbs (2100 kg)	2100 kg
Capacity weight *		
6 cyl.	890 lbs (400 kg)	400 kg
6 cyl. turbo	890 lbs (400 kg)	400 kg
Curb weight		

6 cyl. 3560-3600 lbs (1610-1635 kg) 1610-1635 kg

6 cyl. turbo 3635-3680 lbs (1650-1670 kg) 1645-1665 kg

Permissible axle weight, front

6 cyl. 2490 lbs (1129 kg) 1130 kg

Permissible axle weight, rear

6 cyl. 2311 lbs (1049 kg) 1049 kg

Max roof load 220 lbs (100 kg) 100 kg

Max trailer weight

(w/o brakes) 1100 lbs (500 kg) 500 kg

Max trailer weight

(with brakes)

2" ball 3300 lbs (1500 kg) 1500 kg

1 7/8" ball 2000 lbs (908 kg) 900 kg

Max tongue weight ** 165 lbs (75 kg) 75 kg

WARNING!

When adding accessories, equipment, luggage and other cargo to your vehicle, the total loaded weight capacity of the vehicle must not be exceeded.

* The max permissible axle loads or the gross vehicle weight must not be exceeded.

** See also section "Trailer towing"

All specifications are subject to change without prior notice.

pg.120 Engine/transmission specifications

Engine specifications

Designation: Volvo B 6284 T

Output 268 hp at 5400 rpm (200 KW/90 rps)

Max torque 280 ft. lbs. at 2100-5000 rpm (380 Nm at 35-83 rps)

Number of cylinders 6

Bore 3.19" (81 mm)

Stroke 3.54" (90 mm)

Displacement 2.78 liters

Compression ratio 8.5:1

Number of valves 24

Valve clearance when checking (mm)

Charge air cooler (Intercooler)

Turbocharged engines employ a turbocompressor to force air into the engine inlet manifold and a charge air cooler to cool the compressed inlet air. The resulting increase in air flow raises pressure in the intake manifold and increases engine power over that developed by the normally aspirated engine. The charge air cooler (which resembles a radiator) is located between the turbocompressor and inlet